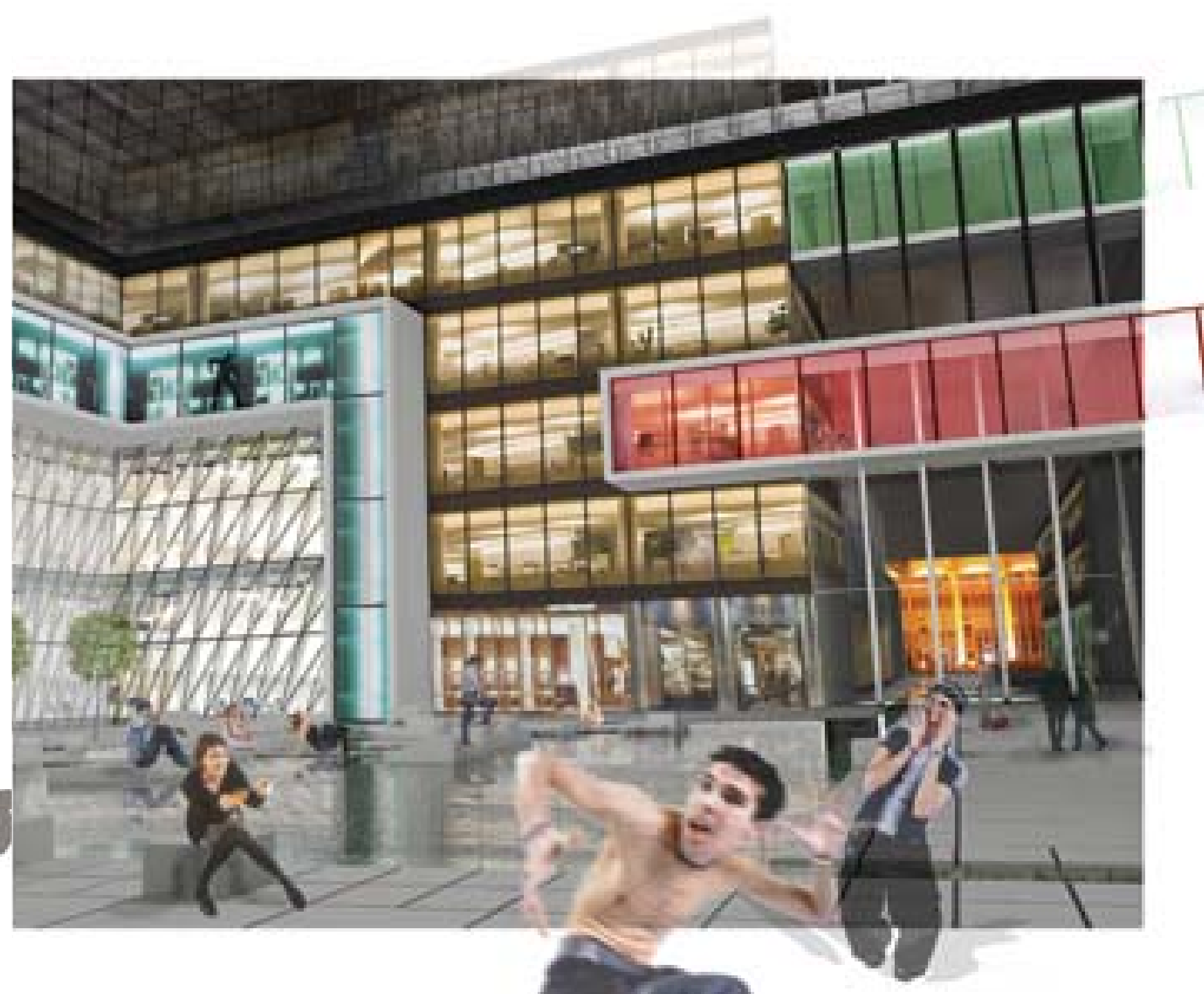


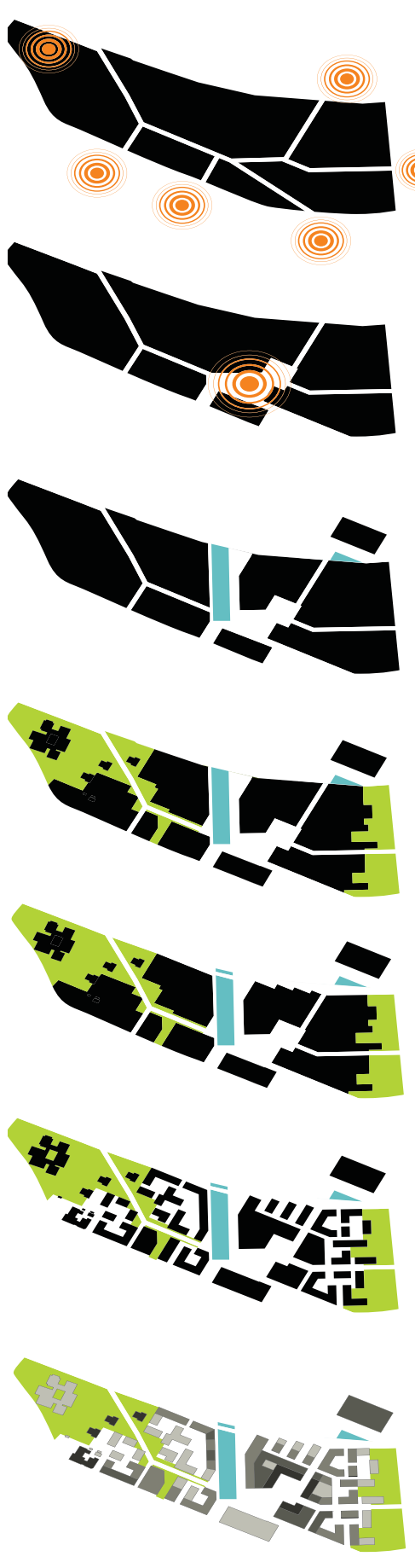


Teglgårds Harbour

A sustainable cultural cluster, integrated to its surroundings and mixed according to its programs.



Integrating



Connections

Connections between the existing attractors, around and at the project site, are established in order to secure physical paths between them.

Attract

A centrally placed area, The Heart, is established and therefore the potential for gathering people with diverse characters and with different purposes is created.

Water in - Land out

A canal is constructed in order to link the fiord to the centrally placed heart. Furthermore the ground is extended towards the fiord giving the new House of Music a unique location.

Green in

A green corridor is established from Karolineleund towards The House of Music. The park around The Utzon Center is continued towards the heart and the Library Park is also linked to this new green strip.

The promenade

The qualities of the fiord are further enhanced by extending the promenade from the city centre all the way to the eastern harbour which is going to be redeveloped in the coming years.

High Pace - Low pace

In relation to the concepts of compressing functions at the site, the project area is divided in sub-areas. So called the high pace area, in the center and the south, and low the pace area in the east and west borders.

Heights

The highest buildings are placed in relation to the places where most people are supposed to move and stay, that means the heart and along the primary connections towards it. Hereby the height of the buildings indicates the purpose around it.

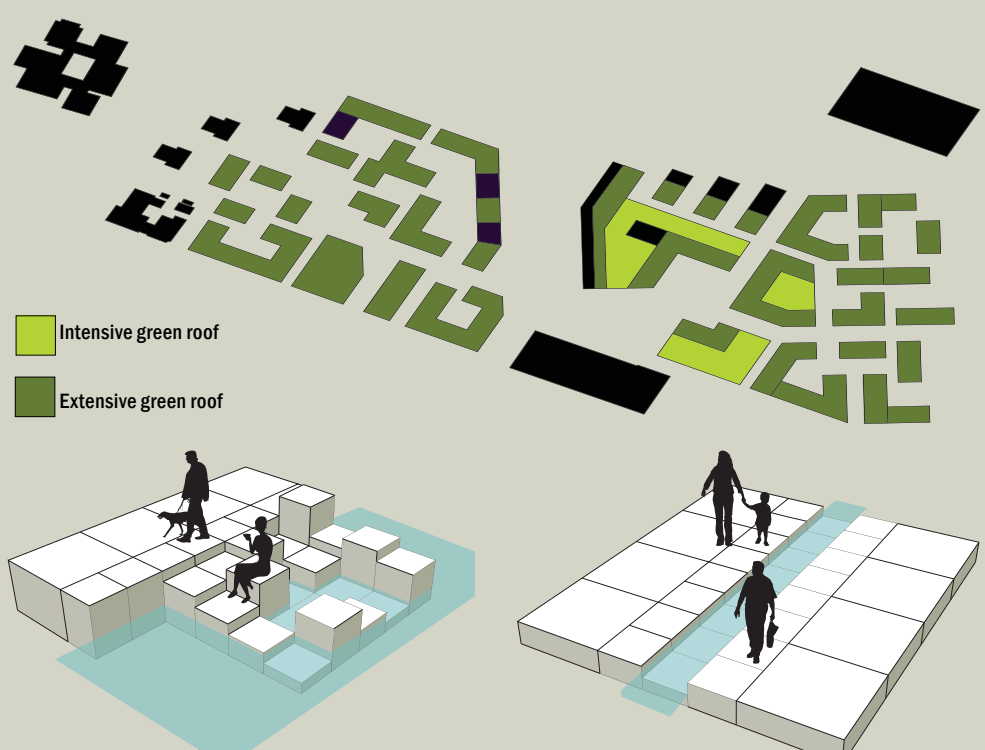


1:2000



Green roof and rainwater

There are two kind of different green roofs in the area. The intensive roof, is a walk able roof, that both have the benefits from green roofs, and can work as a recreational space. The extensive roof is cheaper, and has greater benefits. The benefits are amongst others that they absorb a great amount of rainwater and CO₂, and increase the biodiversity. The Absorbed water is used as a water element in the rest of the area.



The Reservoir

Small islands are placed in the reservoir and create spaces where it is possible to sit the year around. The variety of sizes creates areas for smaller groups or for individual persons. The edge can be used for short pauses.

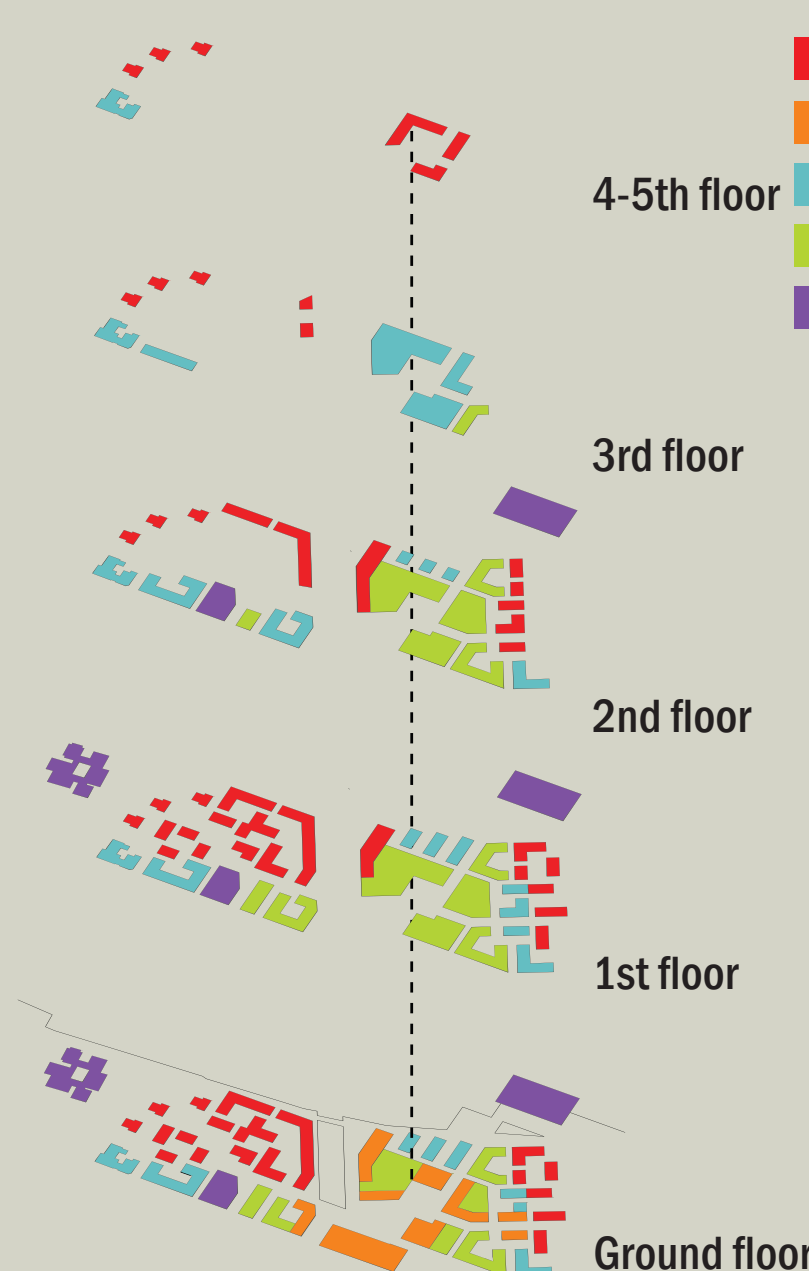
The Canal

By lowering the squares, the canal becomes a attractive place to stop and sit at one of the secondary sitting places. Depending on the water height the edge will constantly change.

The Streams

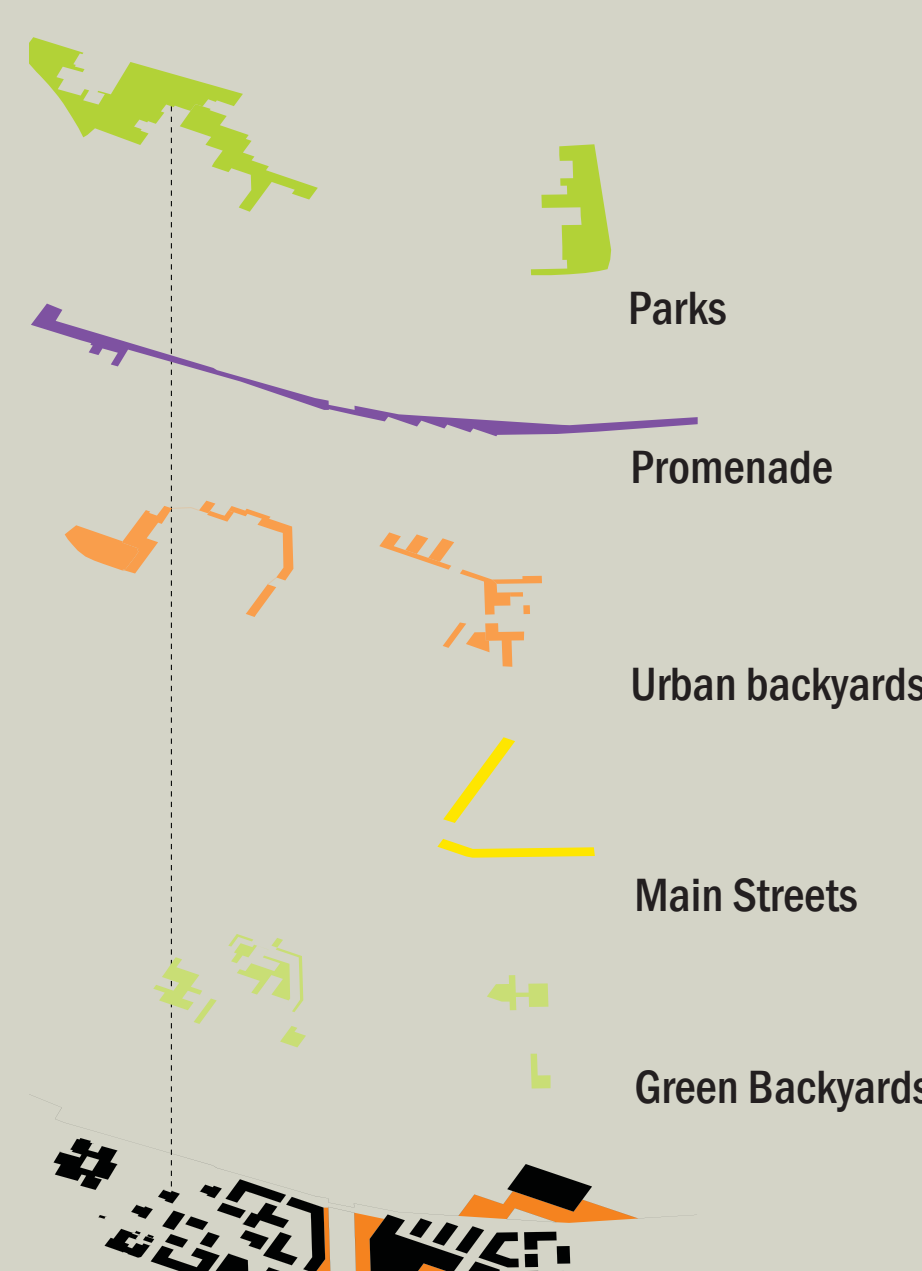
The many small streams become visual guiding lines towards the attractors in the area. Furthermore they can be used for playing, when walking towards the respective destination.

Indoor Programme



According to the vision there is an aim for diversity among the users and uses. The main functions in the area such as the university, residences, offices etc. are placed both separately and in relation to each other. Around the heart various types of commerce are placed at ground level in order to enhance the possibilities for public life. Around the heart the programs are mixed, and they serve as the central space where different types of users can interact. Hereby a hybrid of functions and users should generate an interesting and varied environment both in the indoor and outdoor spaces. The residential areas are primary placed in the low pace areas or in higher floors of the buildings in order to prevent a conflict between the public spaces.

Outdoor Programme



The program consists of green and urban areas. Two parks frame the site to the east and west and connect to the open urban spaces that are placed at the core around the heart. From the heart, two main streets lead to The House of Music and the eastern harbour, while the promenade connects the site along the waterfront. Green and urban backyards are located away from the larger public spaces.